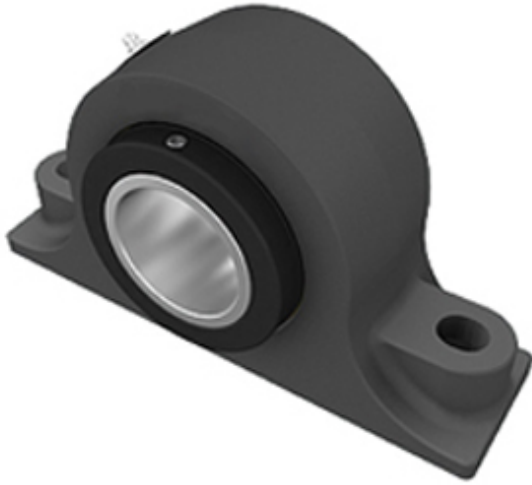




Jinan Yuanyi Hydraulic Equipments Co....



E-P2B-TRB-80MM Bearing 2D drawings and 3D CAD models

3.15 Inch | 80 Millimeter x 5 Inch | 127
Millimeter x 3.74 Inch | 95 Millimeter TIMKEN E-
P2B-TRB-80MM Pillow Block Bearings

Bearing No. E-P2B-TRB-80MM

Category	Pillow Block Bearings
Inventory	0.0
Manufacturer Name	TIMKEN
Minimum Buy Quantity	N/A
Weight	20.88
EAN	0053893775517
Product Group	M06288
Number of Mounting Holes	2
Mounting Method	Concentric Collar
Housing Style	2 Bolt Pillow Block
Rolling Element	Tapered Roller Bearing
Housing Material	Cast Iron
Expansion / Non-expansion	Non-expansion
Mounting Bolts	7/8 Inch
Relubricatable	Yes
Seals	Double Lip Radial
Housing Configuration	1 Piece Solid
Inch - Metric	Metric
Other Features	Double Row Wide Inner Race With Set Screw
Long Description	2 Bolt Pillow Block; 80MM Bore; 95MM Base to Center Height; Concentric Collar Mount; Tapered Roller Bearing; 274.65MM Minimum Bolt Spacing; 284.175MM Bolt Spacing



Jinan Yuanyi Hydraulic Equipments Co....

	Maximum; Relubricatable; Cast Iron; D
Category	Pillow Block
UNSPSC	31171511
Harmonized Tariff Code	8483.20.40.80
Noun	Bearing
Keyword String	Pillow Block
Manufacturer URL	http://www.timken.com
Manufacturer Item Number	E-P2B-TRB-80MM
Weight / LBS	46
Bolt Spacing Minimum	10.813 Inch 274.65Millimeter
Actual Bolt Center to Center	0 Inch 0Millimeter
D	5 Inch 127 Millimeter
B	3.74 Inch 95 Millimeter
d	3.15 Inch 80 Millimeter
Bolt Spacing Maximum	11.188 Inch 284.175Millimeter
Nominal Bolt Center to Center	11 Inch 280 Millimeter
Shaft Size	3.15 in
Shaft Size Type	Metric
Weight	46.0 lb
UPC Code	053893775517
Dimension B	5 in
Dimension L	14 in
Dimension A	3-1/2 in
Dimension J Min.	10-13/16 in
Dimension J Max.	11-3/16 in
Bolt Diameter	7/8 in
Dimension N	1 in
Dimension N ₁	1-3/16 in
Dimension H ₁	2-1/4 in



Jinan Yuanyi Hydraulic Equipments Co....

Dimension H ₂	7-1/2 in
Dimension d ₁	5-17/32 in
Dimension H	3-3/4 in
e	0.50
X (if F _a /F _r ≤ e)	0.87
Y (if F _a /F _r ≤ e)	1.71
X (if F _a /F _r > e)	0.7
Y (if F _a /F _r > e)	2.07
K Factor	1.19
C ₉₀ Dynamic Load Rating ¹	19600 lb
C ₀ Static Load Rating	108600 lb
F _{a-max} Maximum Permissible Thrust Load ²	5181 lb
F _{r-max} Maximum Allowable Slip Fit Radial Load ³	16000 lb
Max. Speed ⁴	1640 rpm
Note	Note: All units have a 1/8 pipe thread grease fitting The Maximum Permissible Thrust Load applies to conditions of slip fit with set screw mounting or in applications where a large moment loading occur